



# Hampton, Herne Bay

Beach House, Spa Esplanade, Hampton, Herne Bay, Kent, CT6 8EP

An exceptional contemporary home in a coveted beachfront location, from where it commands panoramic and far-reaching views of the sea.

Beach House was built to a bespoke design by Skandia-Hus in 2004 and is enviably positioned at the foot of the coastal slope on Hampton's prized Spa Esplanade, in a tranquil yet convenient location with direct beach access.

The house has been thoughtfully designed to take advantage of the magnificent sea views, with the principal living rooms situated at first-floor level. The ground floor accommodation comprises an entrance hall, study, utility room, two bedrooms and two bathrooms, one of which incorporates a sauna.

A central spiral staircase rises to the first floor which comprises an impressive open-plan living and dining room with vaulted ceiling and access to a sea-facing balcony via french doors, a kitchen, and the principal bedroom with en-suite shower room.

Externally there is a boat house opening onto the promenade which also has a large sea facing decked area above. The beautifully maintained South facing garden extends to 180 ft (55 m) and incorporates a sheltered terrace with hot tub, and further seating areas throughout the lawned garden, ideal for entertaining and enjoying the coastal views. At the rear of the property is a gated driveway providing off road parking for several vehicles, accessed via Western Esplanade. Spa Esplanade is accessible by vehicle from Hampton Pier Car Park.

## Location

Spa Esplanade is a beachfront promenade and cycle path close to Hampton Pier and its sailing and rowing clubs, quietly located about a mile west of Herne Bay town centre. A new National Cycle route passes along Western Esplanade close by - The Oyster Bay Trail linking Whitstable to Reculver. Herne Bay town centre offers a range of shops, cafes and restaurants, sports and leisure facilities, schools and the Memorial Park, all within walking or cycling distance. The railway station serves two mainline routes to London, with frequent services to London St Pancras (about 78 mins) and London Victoria (about 93 mins). By road, Herne Bay is served by the coastal dual carriageway A299,

with excellent links to channel ports, the A2, M2 and the rest of the motorway network.

## Accommodation

The accommodation and approximate measurements are:

## GROUND FLOOR

- **Entrance Hall**  
14'7" x 12'2" (4.46m x 3.73m)  
at maximum points.
- **Entrance Porch**  
6'7" x 5'0" (2.03m x 1.53m)  
at maximum points.
- **Study**  
10'5" x 10'2" (3.17m x 3.11m)  
at maximum points.

- **Bedroom 2**  
13'5" x 12'3" (4.09m x 3.74m)  
at maximum points.
- **Bedroom 3**  
13'6" x 7'6" (4.12m x 2.29m)  
at maximum points.
- **Bathroom**  
8'5" x 7'9" (2.59m x 2.37m)  
at maximum points.
- **Shower Room**
- **Sauna**
- **Utility Room**  
8'1" x 5'2" (2.48m x 1.60m)  
at maximum points.
- **Deck**

## FIRST FLOOR

- **Living Room**  
19'7" x 13'5" (5.98m x 4.10m)  
at maximum points.
- **Balcony**  
15'4" x 7'9" (4.67m x 2.36m)  
at maximum points.
- **Dining Area**  
10'8" x 10'5" (3.25m x 3.18m)  
at maximum points.
- **Kitchen**  
10'7" x 9'10" (3.24m x 3.02m)  
at maximum points.
- **Bedroom 1**  
13'9" x 13'5" (4.2m x 4.1m)  
at maximum points.

- **En-Suite Shower Room**

## LOWER GROUND FLOOR

- **Boat House**

## OUTSIDE

- **Garden**  
180' x 42' (54.86m x 12.80m)  
at maximum points.

## Video Tour

Please view the video tour for this property, and contact us to discuss arranging a physical viewing.







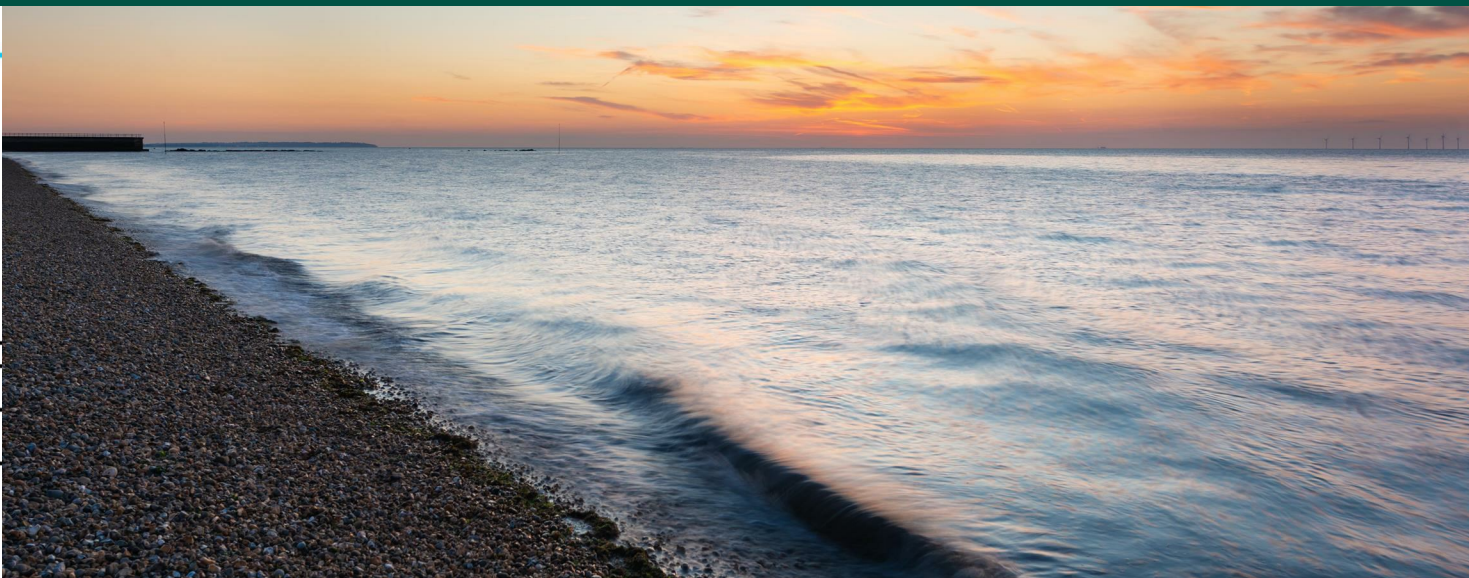
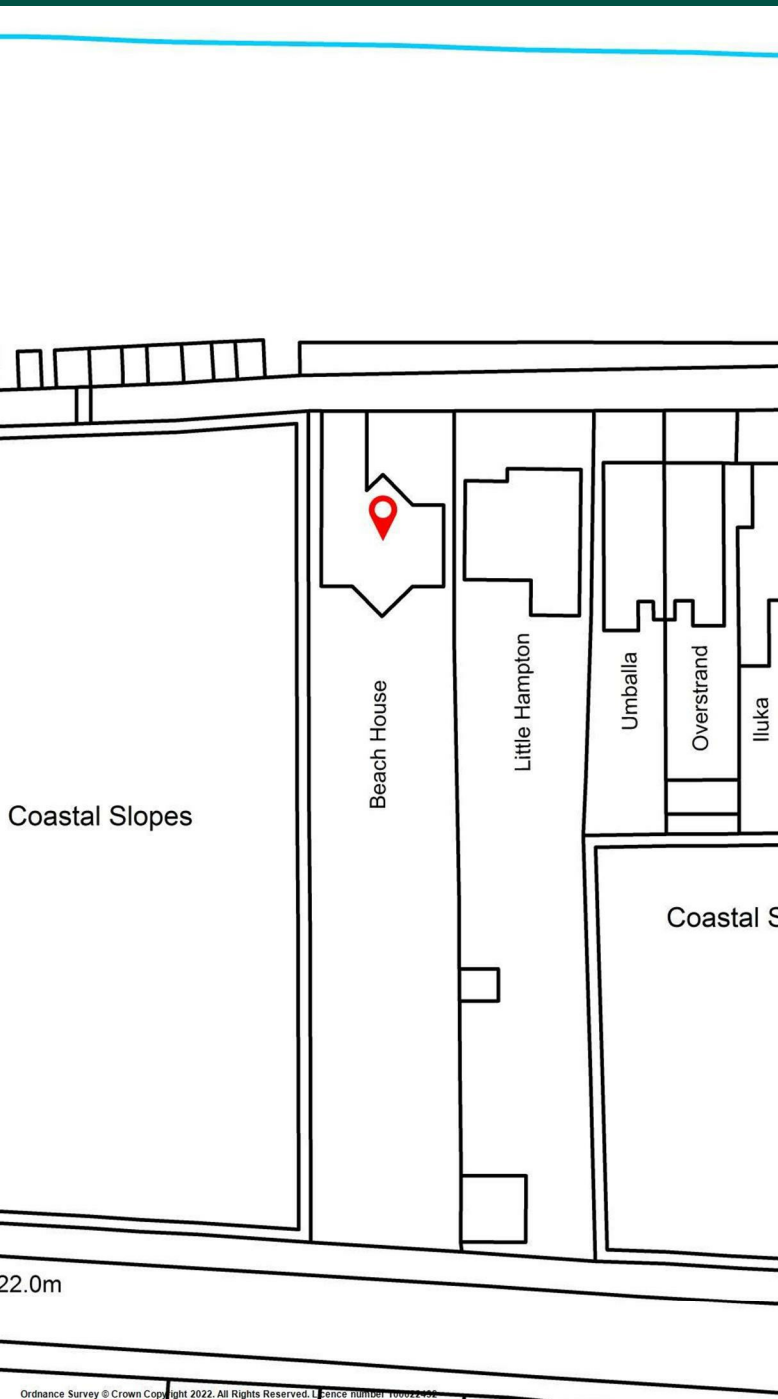










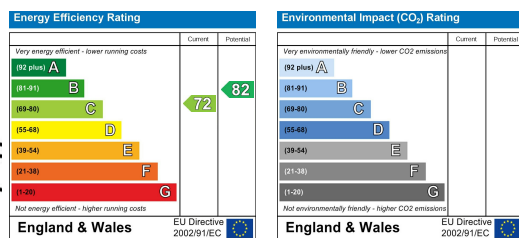


**Viewing**  
**STRICTLY BY PRIOR APPOINTMENT WITH**  
**CHRISTOPHER HODGSON ESTATE AGENTS**  
 95/97 Tankerton Road .Whitstable  
 Kent CT5 2AJ

t: 01227 266441  
 f: 01227 266443  
 e: sales@christopherhodgson.co.uk

[www.christopherhodgson.co.uk](http://www.christopherhodgson.co.uk)

**Energy Performance Certificate**



Christopher Hodgson Estate Agents for itself and as agent for the vendor or lessor (as appropriate) gives notice that: **1** These particulars are only a general outline for the guidance of intending purchasers or lessees and do not constitute in whole or in part an offer or a Contract. **2** Reasonable endeavours have been made to ensure that the information given in these particulars is materially correct but any intending purchaser or lessee should satisfy themselves by inspection, searches, enquiries and survey as to the correctness of each statement. **3** All statements in these particulars are made without responsibility on the part of Christopher Hodgson Estate Agents or the vendor or lessor. **4** No statement in these particulars is to be relied upon as a statement or representation of fact. **5** Neither Christopher Hodgson Estate Agents nor anyone in its employment or acting on its behalf has authority to make any representation or warranty in relation to this property. **6** Nothing in these particulars shall be deemed to be a statement that the property is in good repair or condition or otherwise nor that any services or facilities are in good working order. **7** Photographs may show only certain parts and aspects of the property at the time when the photographs were taken and you should rely upon actual inspection. **8** No assumption should be made in respect of parts of the property not shown in photographs. **9** Any areas, measurements or distances are only approximate. **10** Any reference to alterations or use is not intended to be a statement that any necessary planning, building regulation, listed building or any other consent has been obtained. **11** Amounts quoted are exclusive of VAT if applicable. **12** Whilst reasonable endeavours have been made to ensure the accuracy of any floor plan contained in these particulars, all measurements and areas are approximate and no responsibility is taken for any error, omission or mis-statement. This plan is for illustrative purposes only and should be used as such by any prospective purchaser. **13** Any mapping contained within these particulars is for illustrative purposes only and should be used as such by any prospective purchaser. No responsibility is taken for any error, omission or mis-statement. **14** Any computer generated images contained within these particulars are for illustrative purposes only and should be used as such by any prospective purchaser.

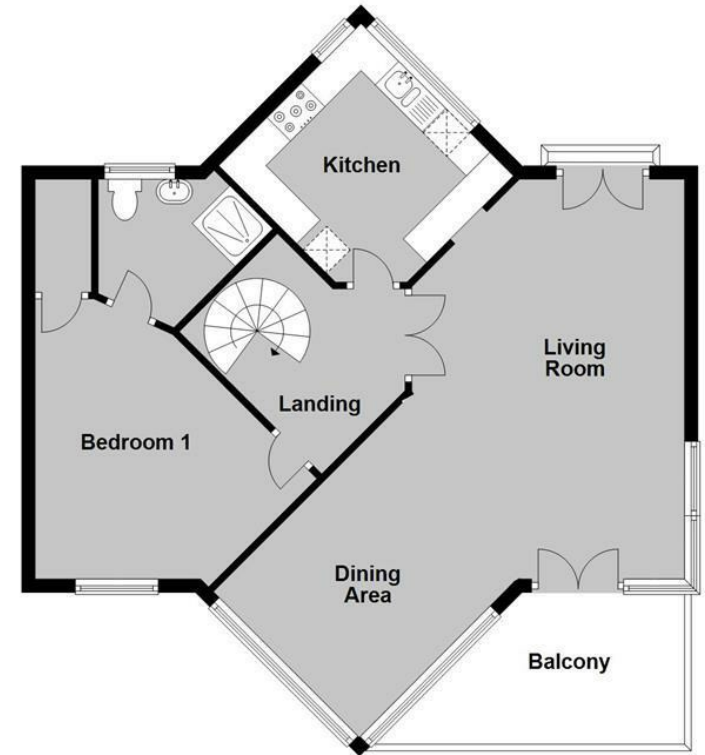
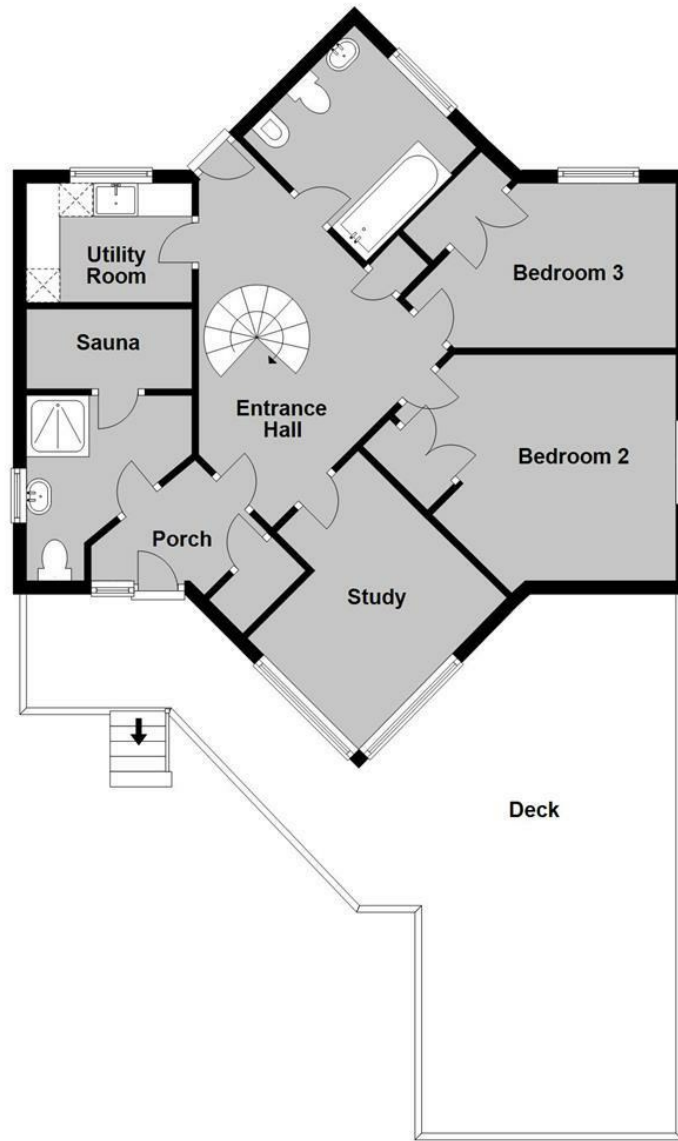
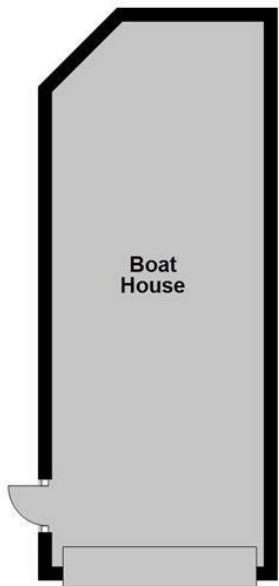
Folio No. 6677JJ

**Ground Floor**  
Approx. 69.8 sq. metres (751.9 sq. feet)



**First Floor**  
Approx. 69.8 sq. metres (750.8 sq. feet)

**Lowest Ground Floor**  
Approx. 25.6 sq. metres (275.5 sq. feet)



Total area: approx. 165.2 sq. metres (1778.2 sq. feet)

...for Coastal, Country & City living.